



FOS Phantom BAR IP65



This manual contains important information.
Please read before operating fixture.

1 Safety Warning

WARNING!!! To reduce the risk of fire, electric shock, or injury to persons, follow these important safety instructions:

- non-qualified personnel, not to disassemble the light arbitrarily and lighting accessories inside.
- rated voltage range: AC110V-120V/60Hz or AC200V-240V / 50HZ (to be selected).
- Do not install near flammable materials, the fixture should be kept at least 1 meter distance.
- lamps used in ambient temperature: -15 °C -40 °C, the highest temperature of the surface of the lamp: 60 °C.
- Do not keep the fixture in conditions that exceed the IP65 protection range, don't use in permanent outdoor installations.
- before using the fixture, must ensure the good grounding.
- Ensure the safe installation of the fixtures and perform and regular inspection.
- lamps consecutive working time, is not recommended to exceed 10 hours.
- Stop using the fixtures, when abnormalities occur during the operation session.
- Fixtures base, screws, clamps, should be regular inspected and reinforced in a timely manner to prevent any accident.
- The fixture uses passive heat dissipation, and its surface can easily accumulate dust, so you must clean it weekly to maintain proper cooling and light output.

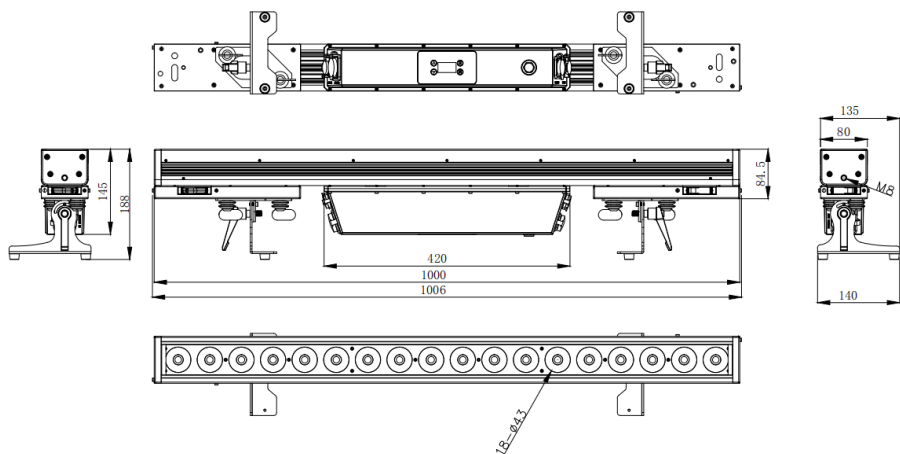
2 Technical Specifications

- Voltage: 100-240V 50-60Hz
- Power consumption: 180W
- LEDs: 18 x 10W RGBWA 5in1 LED
- LED feature: Each Led pixel individual control
- LED Approximate lifespan: 20000 hours
- Lens Beam Angle: 20°
- With Linear Electronic Frost
- Control mode: DMX512, Master-slave, Auto, RDM
- DMX Channels: 2CH / 6CH / 9CH / 92CH / 94CH
- Display: OLED display with 4buttons
- Power: PowerCON in/out
- Signal: 3pin XLR in/out
- Waterproof rate: IP65
- Size: 1006 x 140 x 188 mm
- Net weight: 10.25 KG

Installation methods:

1. Stand in ground by floor bracket
2. Mount in truss by omega bracket and clamp
3. Vertical suspension via side M8 hole with Clamp
4. Vertically installed by Base stand (optional)
5. Seamless spliced all around.

Product Dimension:



3 Menu Layout

1. Key instruction:

Button	Meaning
M	Menu/back
E	Enter/confirm
▲	up
▼	down

2. All the features selected by pressing the “E” key to confirm
3. Screen Password: E-▲-▼-▲-▼-E

LED Display Menu:

Menu	Item1	Item2	Item3
DMX Address	DMX Address	001--512	
MODE	DMX mode	2CH 6CH 9CH 92CH 94CH	
	Slave		
	Auto	Auto	01-15
		speed	01-10
	Static	Dimmer	000-255
		Colour	01-51
		Red	000-255
		Green	000-255
		Blue	000-255
		White	000-255
		Yellow	000-255
		Fog	000-255
		Strobe	00-20
Setting	Display Flip	On/Off	
	Off Screen	Off 20s 40s 60s	
	Locking Key	On/Off (Password: E-▲-▼-▲-▼-E)	
	DMX State	DMX hold Black out	
	Dimmer Curve	Linear Curve Exponential	

		Logarithmic S-curve	
	Dimmer Response	LED Halogen Stage Theatre	
	White balance	Yes/No	
	Factory reset	YES/NO	
System info	Firmware	Hardware version	18K10W V1.02
		Software version	18K10W V3.05
	Temperature	Temp Unit	Celsius Fahrenheit Kelvin
		LED pad	xx°C
	RDM UID	RDM UID xxxxxxxxxxxx	
	Time information	Usage time Total time	

4 DMX Channels Chart

2 Channels

Channel	Value	Function
1	0-4	Null
	5-9	Color 1
	10-14	Color 2

	255-255	Color 51
2	0-255	Electric frost

6Channels

Channel	Value	Function
1	0-255	Electric frost
2	0-255	Red 0%-100%
3	0-255	Green 0%-100%
4	0-255	Blue 0%-100%
5	0-255	White 0%-100%
6	0-255	Amber 0-100%

9Channels

CH	Value	Function
1	0-255	Dimmer
2	0-255	Electric frost
3	0-255	Auto
4	0-255	Auto speed/Led strobe
5	0-255	Red 0%-100%
6	0-255	Green 0%-100%
7	0-255	Blue 0%-100%
8	0-255	White 0%-100%
9	0-255	Amber 0%-100%

92Channels

CH	Value	Function
1	0-255	Dimmer
2	0-255	Electric frost
3	0-255	Red1 0%-100%
4	0-255	Green1 0%-100%
5	0-255	Blue1 0%-100%
6	0-255	White1 0%-100%
7	0-255	Amber1 0-100%

...
88	0-255	Red18 0%-100%
89	0-255	Green18 0%-100%
90	0-255	Blue18 0%-100%
91	0-255	White18 0%-100%
92	0-255	Amber18 0-100%

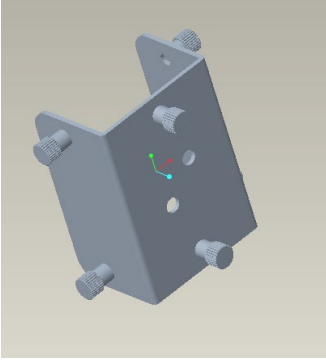
94Channels

CH	Value	Function
1	0-255	Dimmer
2	0-255	Electric frost
3	0-255	Auto
4	0-255	Auto speed/Led strobe
5	0-255	Red1 0%-100%
6	0-255	Green1 0%-100%
7	0-255	Blue1 0%-100%
8	0-255	White1 0%-100%
9	0-255	Amber1 0-100%
...
90	0-255	Red18 0%-100%
91	0-255	Green18 0%-100%
92	0-255	Blue18 0%-100%
93	0-255	White18 0%-100%
94	0-255	Amber18 0-100%

5 Optional base Installation

2lights combine need via a connect part as below, Max. 2lights combine when Vertical no matter use Base stand or via side M8 hole with clamp.

Connect parts(optional):

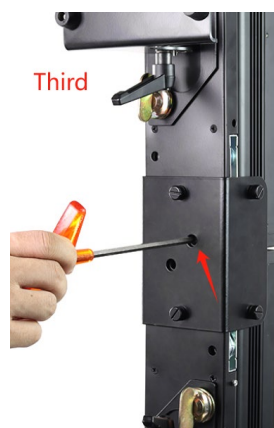
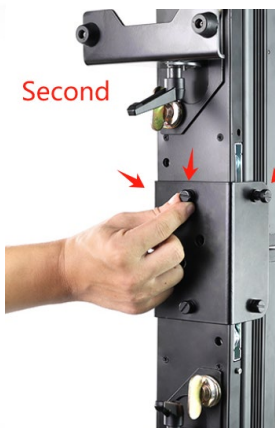
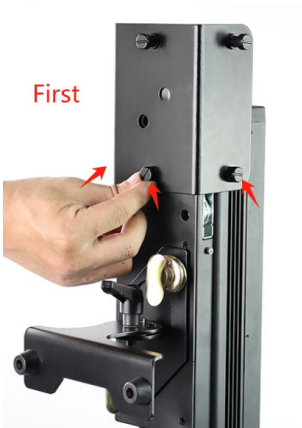


How to install the connect part:

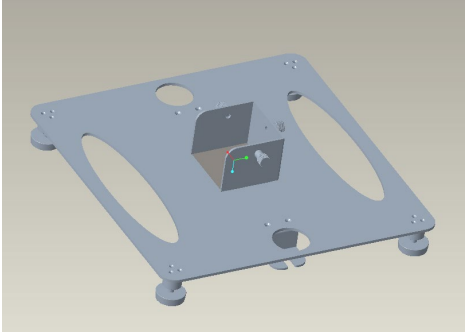
First: 3 screws tightened by hand or tool in one light

Second: 3screws tightened by hand or tool in another light

Third: use tool clockwise rotate 90° to hookup in both lights



Base Stand(optional):



How to install the Base Stand:

First step: 3 screws tightened by hand or tool

Second step: use tool clockwise rotate 90° to hookup





Warranty Card

Name	Model
------	-------

Production	Purchase
------------	----------

End User
Company Name:
Add:

Sale Store	
Link man:	
Tel:	Stamp

Description: These must be truthfully fill, seal by the end-user and point-of-sale, or else the warranty will not work (warranty period and terms, see the following)

warranty period: one year since purchase warranty terms: 1、 If fail when using the product in normal state, you can made under the provisions of the warranty, show the warranty card and purchase bills(copy), and enjoy free maintenance service in a specific service center or the manufacturer.

2. The following will be the implementation of paid service:

- (1) Without the effective warranty card
- (2) There's blank, alter and no point-of-sale name
- (3) Fail caused by bad earthing, wrong voltage supply
- (4) Fail caused by transportation or unloading
- (5) Fail caused by operation not described in the manual
- (6) Fail caused by disassemble from unauthorized personnel
- (7) Fail caused by using the unauthorized control system

Note:

Based on our company continue to improve the product, the statement containing data may have changed, without notice. Company retains its right to change specifications related when product is improved. Thank you for your understanding.